



FITTING INSTRUCTIONS FOR LP0166 LICENCE PLATE BRACKET
DUCATI MONSTER 821/1200 2014-

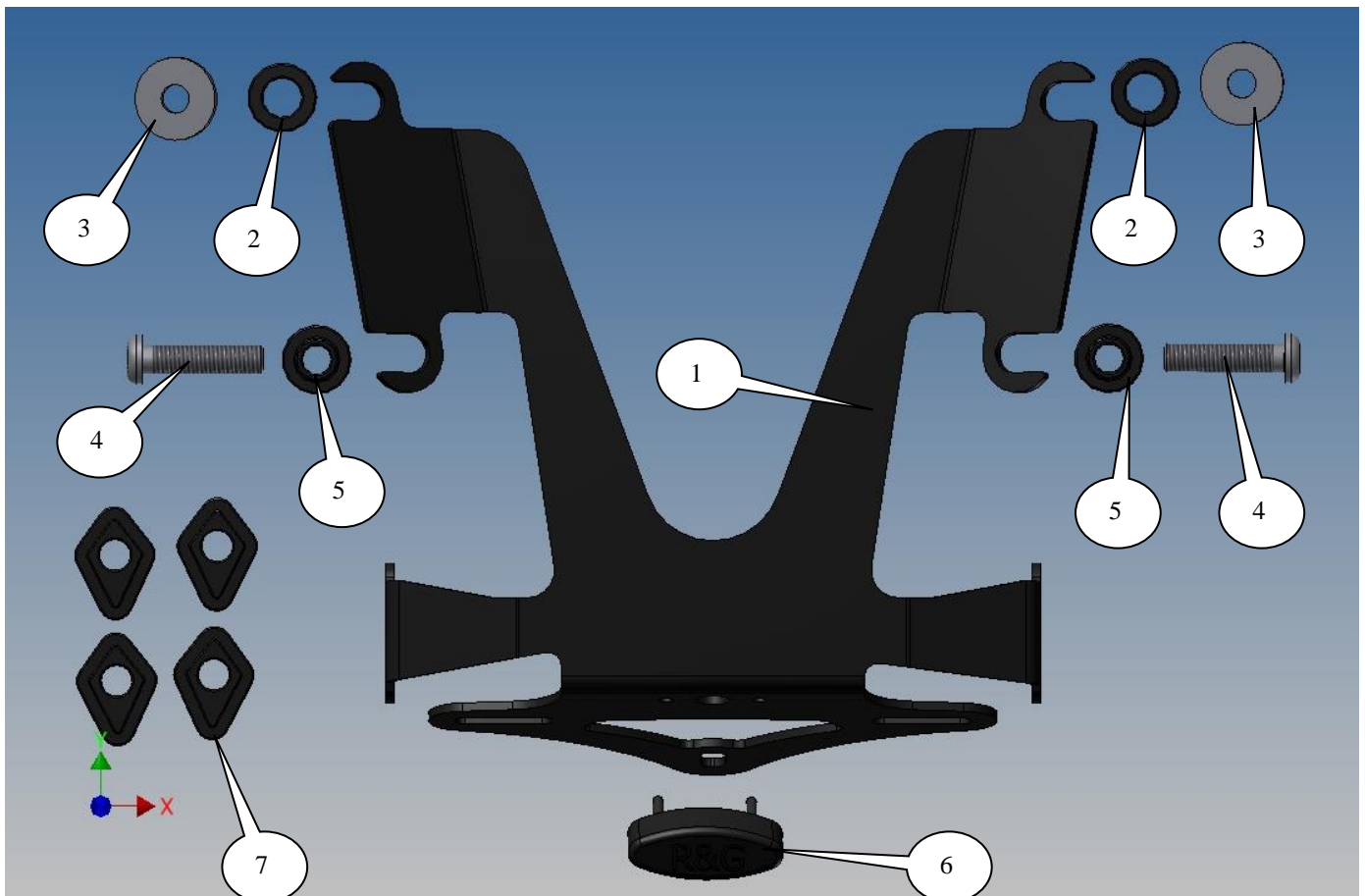
Page | 1



FOR MONSTER 1200 2014 PLEASE SEE NOTES AT END OF FITTING INSTRUCTIONS
THIS KIT CONTAINS THE ITEMS PICTURED AND LABELLED BELOW.
DO NOT PROCEED UNTIL YOU ARE SURE ALL PARTS ARE PRESENT.

Please note that the way the kit is packed does not necessarily represent the way of mounting to the bike

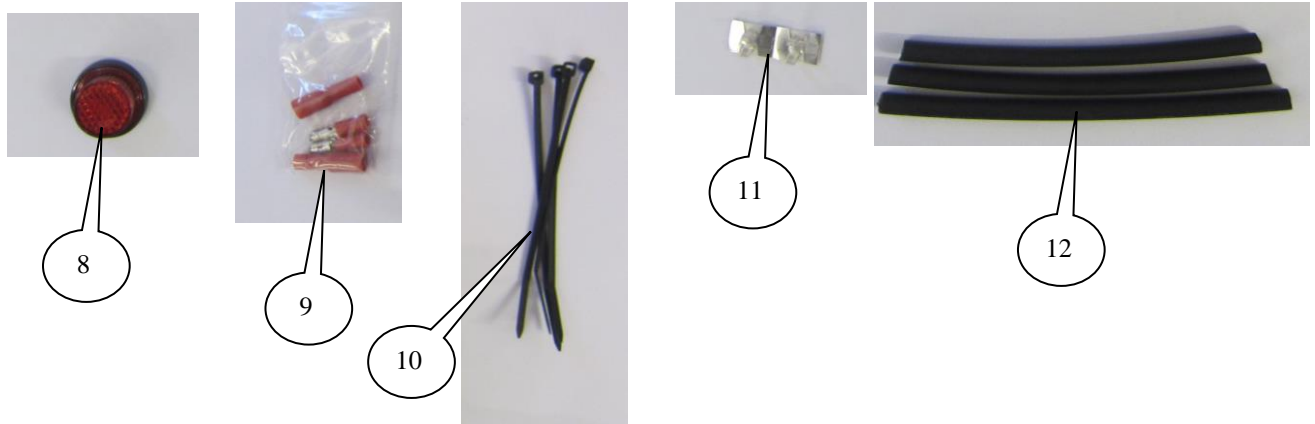
THE PARTS SHOWN MAY BE REPRESENTATIVE ONLY (FOR CLARITY OF INSTRUCTIONS ONLY)



R&G Racing

Unit 1 Shelleys Lane, East Worldham, Alton, Hants GU34 3AQ

Tel: +44 (0)1420 89007 Fax: +44 (0)1420 87301 www.rg-racing.com Email: info@rg-racing.com



LEGEND

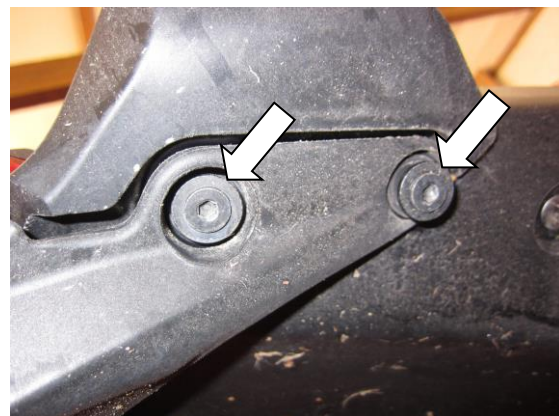
- ITEM 1 = LICENCE PLATE BRACKET (TB0166) (x1).
 ITEM 2 = FRONT SPACERS (PLAIN=S0826) (x2).
 ITEM 3 = M8 WASHERS (x2).
 ITEM 4 = M8x35mm LONG BUTTON HEAD BOLTS (REAR MOUNTS) (x2).
 ITEM 5 = REAR SPACERS (TOP HAT SHAPED=S0825) (x2).
 ITEM 6 = LICENCE PLATE ILLUMINATOR WITH SHROUD (LA0002) (x1).
 ITEM 7 = MINI INDICATOR ADAPTORS (I0033) (x4)
 ITEM 8 = REFLECTOR (REFL 1) (x1).
 ITEM 9 = LICENCE PLATE ILLUMINATOR AND INDICATOR CONNECTORS (CON0004) (x3).
 ITEM 10 = SMALL CABLE TIES (x4).
 ITEM 11 = SELF ADHESIVE CABLE CLIPS (x2).
 ITEM 12 =180mm LENGTH OF HEAT SHRINK (x3).

TOOLS REQUIRED

- Set of Torx keys to include T15 and T30 sizes.
 - Set of Allen keys to include 5mm A/F.
- Socket set to include 6 and 8mm A/F socket and wrench.
 - 20mm Socket or spanner.
 - Electrical pliers/crimps.
 - Small amount of super glue.



PICTURE 1



PICTURE 2

R&G Racing

Unit 1 Shelleys Lane, East Worldham, Alton, Hants GU34 3AQ

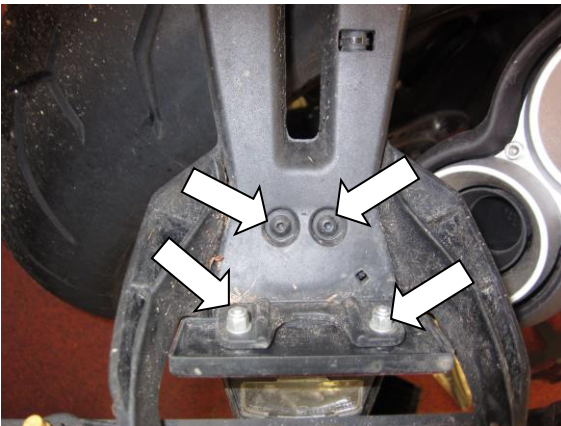
Tel: +44 (0)1420 89007 Fax: +44 (0)1420 87301 www.rg-racing.com Email: info@rg-racing.com



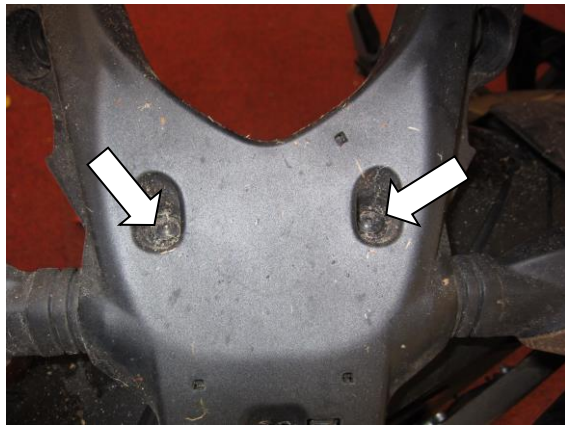
PICTURE 3



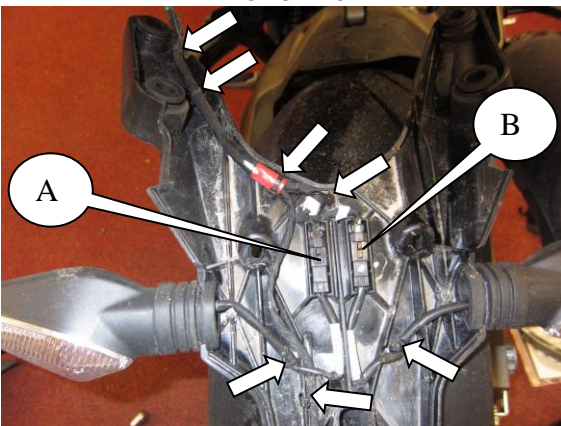
PICTURE 4



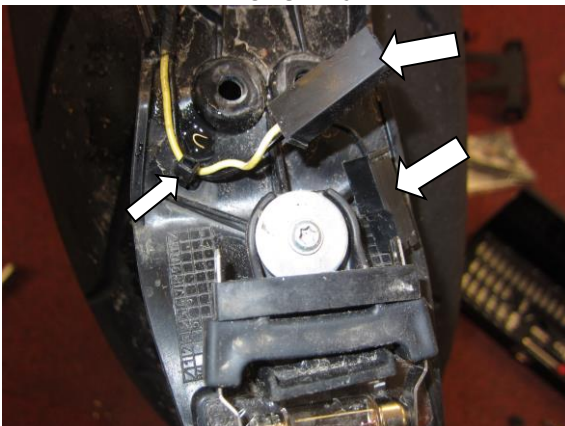
PICTURE 5



PICTURE 6



PICTURE 7



PICTURE 8

R&G Racing

Unit 1 Shelleys Lane, East Worldham, Alton, Hants GU34 3AQ

Tel: +44 (0)1420 89007 Fax: +44 (0)1420 87301 www.rg-racing.com Email: info@rg-racing.com



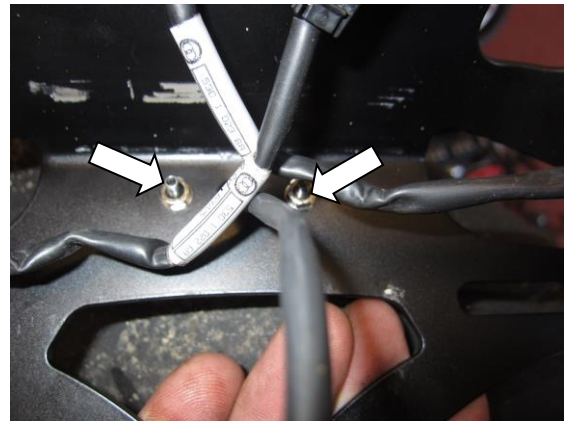
PICTURE 9



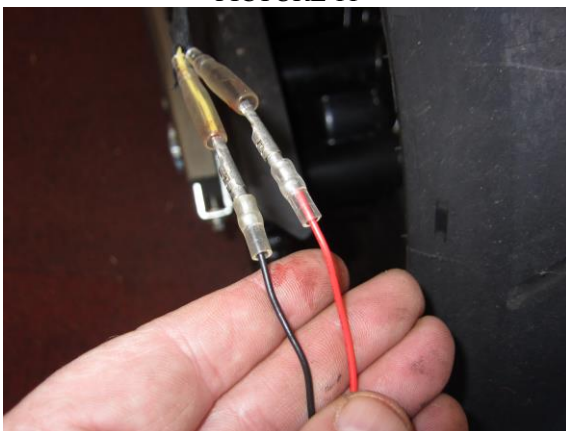
PICTURE 10



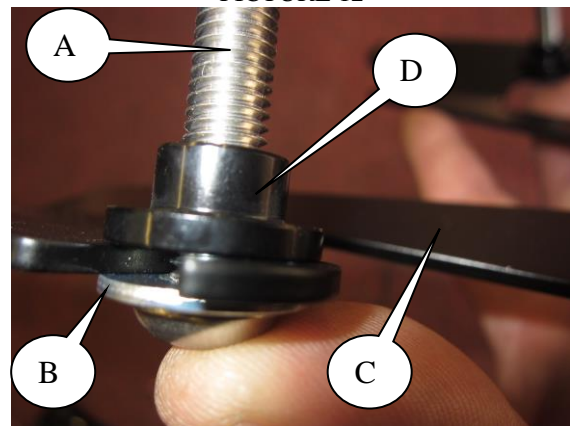
PICTURE 11



PICTURE 12



PICTURE 13

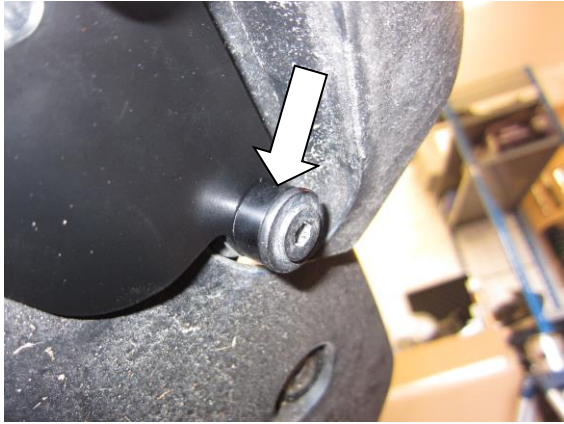


PICTURE 14

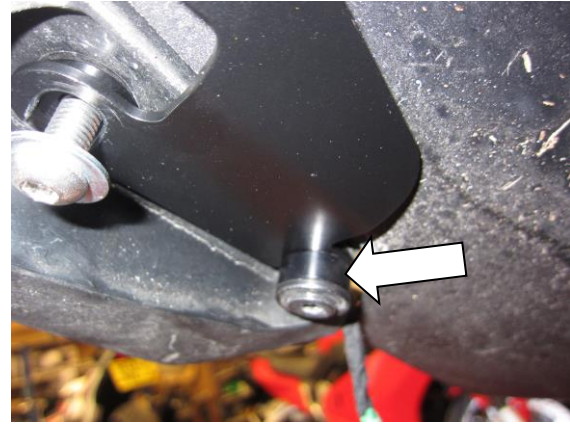
R&G Racing

Unit 1 Shelleys Lane, East Worldham, Alton, Hants GU34 3AQ

Tel: +44 (0)1420 89007 Fax: +44 (0)1420 87301 www.rg-racing.com Email: info@rg-racing.com



PICTURE 15



PICTURE 16

FITTING INSTRUCTIONS FOR MONSTER 821 2014-

- To fit the R&G tail tidy, remove the rider seat using the key as shown in picture 1.
- Remove the four bolts arrowed in pictures 2 and 3 and gently remove the original licence plate bracket (please note it is mounted in rubber grommets) as shown in picture 4.
- Lower the bracket and rest on the rear wheel as shown in pictures 7 and 8.
- Remove the four screws and two nuts arrowed in pictures 5 and 6.
- Remove the original reflector and separate the upper and lower halves of the bracket.
- Disconnect the wiring plug sockets arrowed in picture 8, cut the eight cable ties arrowed in pictures 7 and 8 to allow removal of the wiring loom.
- Disconnect the two indicator wiring plug sockets labelled 'A' and 'B' in picture 7 (**please note it is a good idea to mark the wires using a suitable marker**).
- Remove the two threaded extensions arrowed in pictures 9 and 10 (please note these are the two furthest back on the motorcycle).

If fitting the original indicators

- Squeeze the indicator stems through the diamond shaped holes in the new licence plate bracket (item 1) it is a good idea to use a small amount of oil or liquid soap to ease fitting, as shown in picture 11 (please ensure the indicators are fitted on the correct side as original (with the drain slots pointing down)).

If fitting the R&G mini indicators (R&G product code RG370=bulb, RG371=LED or RG372=Aero LED

- If fitting the R&G Mini Indicators, we suggest the OEM indicator wiring can be "cut and shut" in order to re-use the connectors to connect the R&G Mini Indicators to the wiring loom. This is done by cutting the connectors off the OEM indicators, before fitting the bullet connectors (item 9) to the exposed wiring and using the bullet connectors to connect to the R&G indicators. Plug it into the loom to check at this stage (if illumination fails, swap the bullet connections around). (Please use the heat-shrink (item 12) to protect the new indicator wires).
- It is a good idea at this point to turn the ignition on and check for the correct operation of both indicators.
- Fit the R&G licence plate illuminator (item 6) to the assembly as shown in picture 12. Use a small amount of superglue to stick the light shroud in position. Fit one length of the heat-shrink (item 12) to protect the wires and tighten the nuts on the rear, as shown in picture 12.
- To connect the licence plate illuminator, use the wiring connectors (item 9). To do this, we suggest cutting the connectors from the original licence plate illuminator wiring and fit the bullet connectors (item 9) to each wire, allowing it to connect to the R&G licence plate illuminator wiring before

R&G Racing

Unit 1 Shelleys Lane, East Worldham, Alton, Hants GU34 3AQ

Tel: +44 (0)1420 89007 Fax: +44 (0)1420 87301 www.rg-racing.com Email: info@rg-racing.com



checking correct operation (if illumination fails, swap the bullet connections around) (this connection can also be soldered) as shown in picture 13.

- Place one of the washers (item 3, labelled B in picture 14) onto one of the button head bolts (item 4, labelled A in picture 14) and through one of the rearmost slots in the new licence plate bracket (item 1, labelled C in picture 14) and then place one of the top hat shaped spacers (item 5, labelled D in picture 14) over the end of the bolt as shown in picture 14.
- Offer the bracket into position as shown in picture below and engage the thread (do not tighten at this stage).



- Place the remaining washer (item 3, labelled B in picture 14) onto the remaining button head bolt (item 4, labelled A in picture 14) and through the remaining rearmost slot in the new licence plate bracket (item 1, labelled C in picture 14) and then place the remaining top hat shaped spacer (item 5, labelled D in picture 14) over the end of the bolt as shown in picture 14.
- Engage the thread (do not tighten at this stage).
- Place the two remaining plain spacers (item 2) over the front threaded extensions as arrowed in pictures 15 and 16 and use the original bolts to secure and tighten.
- Tighten the remaining bolts.
- Reconnect the wiring plug sockets as original (if the licence plate illuminator or indicators fail to work swapping the bullet connectors should cure this).
- Please check operation of all lights.
- Use the cable ties (item 10) and cable clips (item 11) to tidy the wires, you may have to pull the wiring loom through to the under-seat compartment to eliminate loose wires (please ensure to prevent the wires from pulling back through).
- Ensure the tail tidy is securely mounted and fully tightened.
- Re-fit the seat.
- Re-fit the licence plate (it may require drilling).
- **IMPORTANT: IF FITTING A FULL-SIZE LICENCE PLATE AND PLACING IT FAR DOWN ON THE LICENCE PLATE HANGER, THERE IS A SMALL CHANCE OF THE LICENCE PLATE HITTING THE BACK WHEEL UNDER HEAVY LOAD AND OVER LARGE BUMPS IN THE ROAD. IT IS YOUR RESPONSIBILITY TO CHECK FOR THIS POSSIBILITY AND TAKE AVOIDING ACTION. FAILURE TO CHECK THIS COULD RESULT IN SERIOUS INJURY OR DAMAGE.**
- Depending on local laws, attach enclosed reflector (item 8) in an appropriate location.
- Test the license plate illuminator and all lights before riding.

FITTING INSTRUCTIONS FOR MONSTER 1200 2014-

Please note on this model you will have to remove the original indicator brackets and the wiring will have a slightly different routing.

Digital copies of these instructions are available to download from www.rg-racing.com

ISSUE 1 18/11/2014 (NSY)

R&G Racing

Unit 1 Shelleys Lane, East Worldham, Alton, Hants GU34 3AQ

Tel: +44 (0)1420 89007 Fax: +44 (0)1420 87301 www.rg-racing.com Email: info@rg-racing.com



CONSUMER NOTICE

The catalogue description and any exhibition of samples are only broad indications of the Products and R&G may make design changes which do not diminish their performance or visual appeal and supplying them in such state shall conform to the order. The Buyer acknowledges no representation or warranty (other than as to title) has been given or will apply to the Products other than those in R&G's order or confirmation and the Buyer confirms it has chosen the Products as being of merchantable quality and suitable for its particular purposes. Where R&G fits the Products or undertakes other services it shall exercise reasonable skill and care and rectify any fault free of charge unless the workmanship has been disturbed. The Buyer is responsible for ensuring that the warranty on the motorcycle is not affected by the fitting of the Products. On return of any defective Products R&G shall at its option either supply a replacement or refund the purchase money but shall not be liable if the Products have been modified or used or maintained otherwise than in accordance with R&G's or manufacturer's instructions and good engineering practice or if the defect arises from accident or neglect. Other than identified above and subject to R&G not limiting its liability for causing death and personal injury, it shall not be liable for indirect or consequential loss and otherwise its liability shall be limited to the amounts paid by the Buyer for the Products or the fitting or service concerned. These terms do not affect the Buyer's statutory rights.

Page | 7

R&G RACING RETURNS POLICY (NON-FAULTY GOODS)

Returns must be pre-authorized (if not pre-authorized the return will be rejected). Goods may only be returned direct to us if they were purchased direct from us (customer must prove if necessary). Otherwise to be returned to original vendor. Goods must be in re-sellable condition, in the opinion of R&G Racing. All returns are subject to a 25% restocking and handling fee (25% of the gross value exc. P&P – at the prevailing price at time of purchase). The customer must pay any and all carriage charges. No returns of discontinued products, unless within 14 days of purchase. This policy does not affect your statutory rights and does not refer to faulty goods.

R&G Racing

Unit 1 Shelleys Lane, East Worldham, Alton, Hants GU34 3AQ

Tel: +44 (0)1420 89007 Fax: +44 (0)1420 87301 www.rg-racing.com Email: info@rg-racing.com



**INSTRUCTIONS DE MONTAGE POUR LP0166 SUPPORT DE PLAQUE
DUCATI MONSTER 821/1200 2014-**

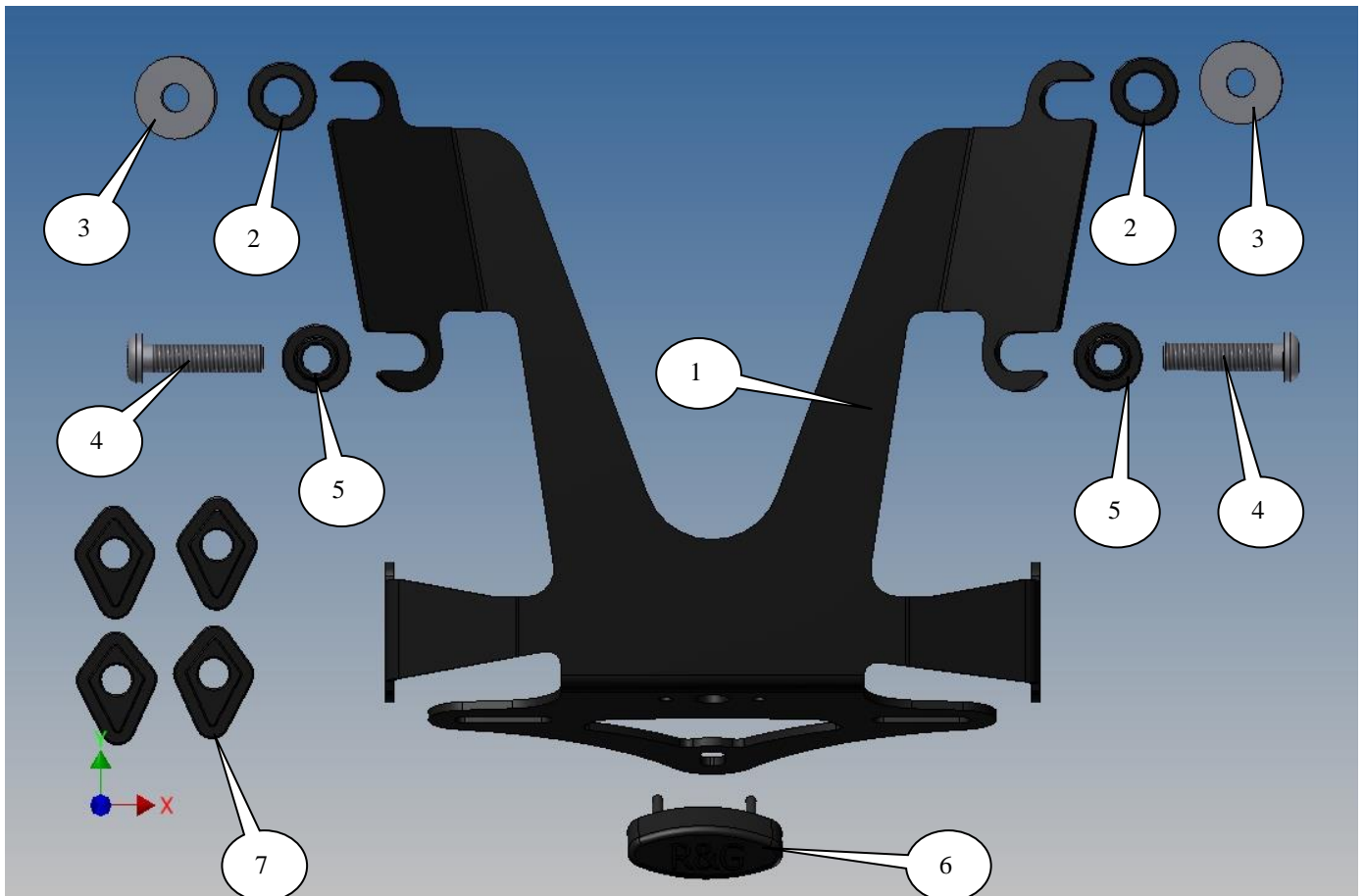
Page | 8



POUR MONSTER 1200 2014 SVP VOI LES NOTES A LA FIN DES INSTRUCTIONS DE MONTAGE

Assurez vous que toutes les pièces soient présentes avant de procéder au montage.

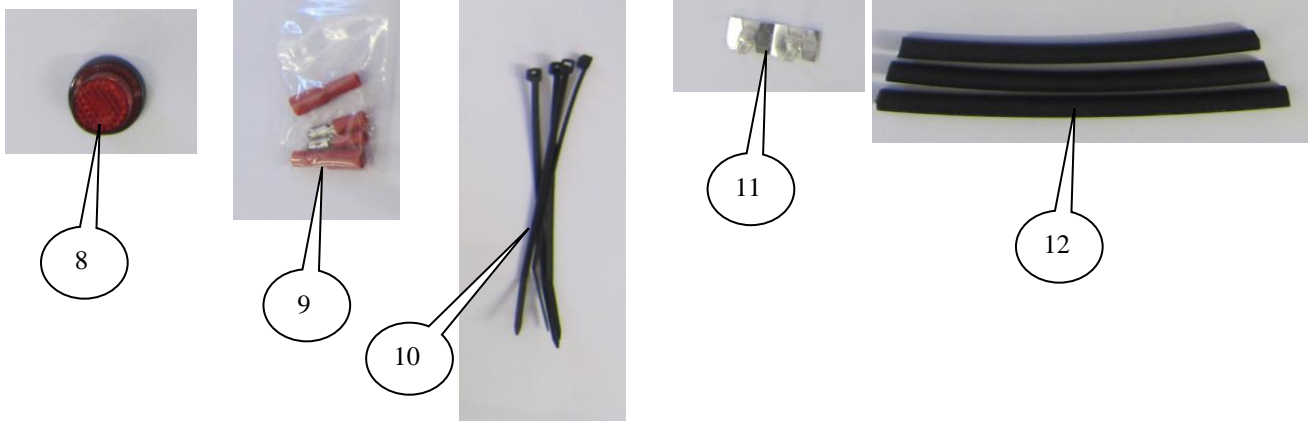
LA FAÇON DONT LE KIT EST EMBALLE NE CORRESPOND PAS FORCEMENT A LA FAÇON DE MONTER LES PIECES SUR LA MOTO. LES PIECES PRESENTEES PEUVENT N'ETRE QUE REPRESENTATIVES, AFIN DE FACILITER ET CLARIFIER LES INSTRUCTIONS DE MONTAGE)



R&G Racing

Unit 1 Shelleys Lane, East Worldham, Alton, Hants GU34 3AQ

Tel: +44 (0)1420 89007 Fax: +44 (0)1420 87301 www.rg-racing.com Email: info@rg-racing.com



LEGENDE

- ARTICLE 1 = SUPPORT DE PLAQUE (TB0166) (x1).
 ARTICLE 2 = ENTRETOISES AVANT (PLAT=S0826) (x2).
 ARTICLE 3 = M8 RONDELLES (x2).
 ARTICLE 4 = M8x35mm BOULONS (SUPPORTS ARRIERE) (x2).
 ARTICLE 5 = ENTRETOISES ARRIERE (FORME DE CHAPEAU=S0825) (x2).
 ARTICLE 6 = FEU DE PLAQUE AVEC LINCEUL (LA0002) (x1).
 ARTICLE 7 = ADAPTATEURS MINI CLIGNOTANTS (I0033) (x4)
 ARTICLE 8 = REFLECTEUR (REFL 1) (x1).
 ARTICLE 9 = FEU DE PLAQUE ET CONNECTEURS DE CLIGNOTANT (CON0004) (x3).
 ARTICLE 10 = PETITS COLLIERS DE SERRAGE (x4).
 ARTICLE 11 = CLIPS CABLE AUTOOCO COLLANTS (x2).
 ARTICLE 12 =180mm LONGUEUR DE GAINE THERMO RETRACTABLE (x3).

OUTILS REQUIS

- Clés Torx T15 et T30.
- Jeu de clés Allen dont clés de 5mm.
- Clés à douille et douilles 6 et 8mm.
 - Clé à molette 20mm.
- Pincés électriques / sertissages.
 - Un peu de superglue.



PHOTO 1

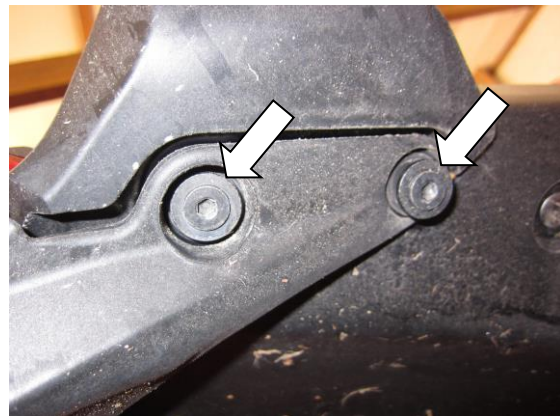


PHOTO 2

R&G Racing

Unit 1 Shelleys Lane, East Worldham, Alton, Hants GU34 3AQ

Tel: +44 (0)1420 89007 Fax: +44 (0)1420 87301 www.rg-racing.com Email: info@rg-racing.com



PHOTO 3



PHOTO 4

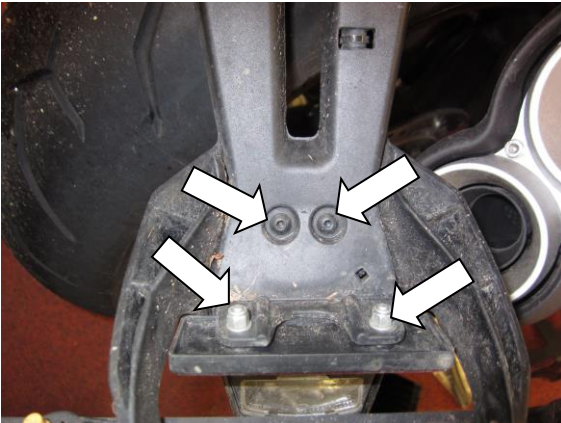


PHOTO 5

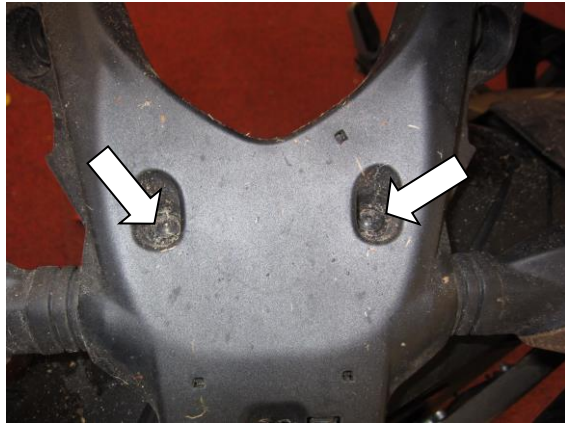


PHOTO 6

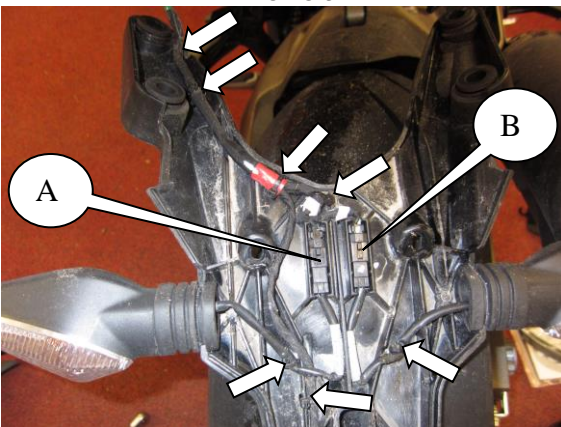


PHOTO 7

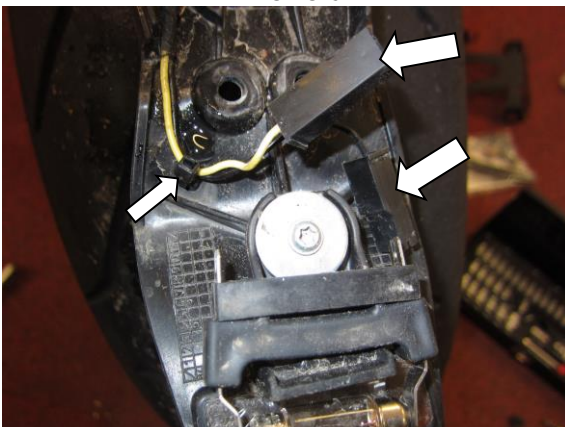


PHOTO 8

R&G Racing

Unit 1 Shelleys Lane, East Worldham, Alton, Hants GU34 3AQ

Tel: +44 (0)1420 89007 Fax: +44 (0)1420 87301 www.rg-racing.com Email: info@rg-racing.com



PHOTO 9



PHOTO 10



PHOTO 11

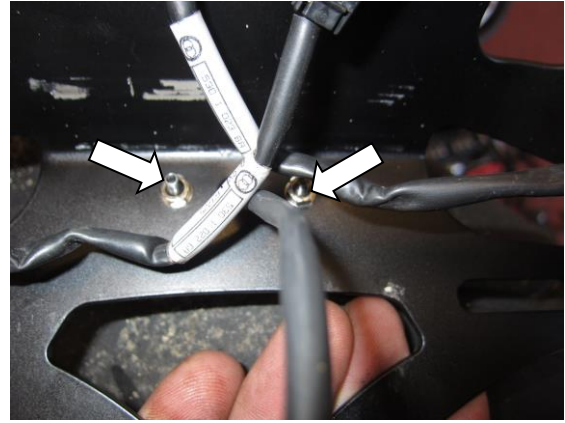


PHOTO 12

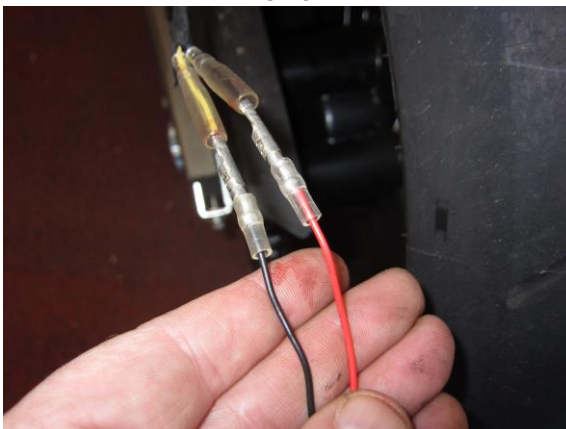


PHOTO 13

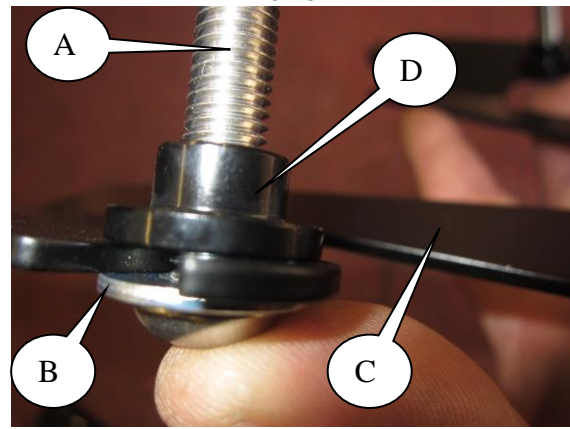


PHOTO 14

R&G Racing

Unit 1 Shelleys Lane, East Worldham, Alton, Hants GU34 3AQ

Tel: +44 (0)1420 89007 Fax: +44 (0)1420 87301 www.rg-racing.com Email: info@rg-racing.com

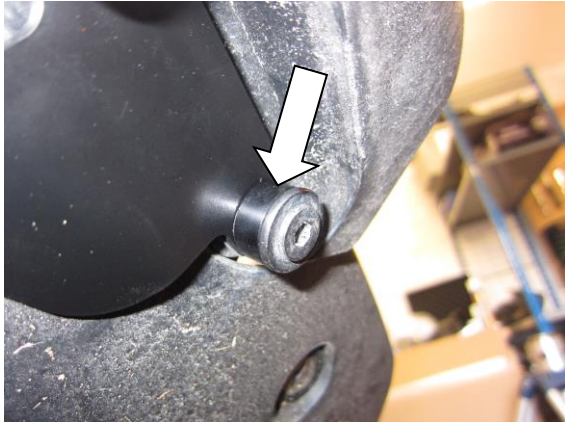


PHOTO 15

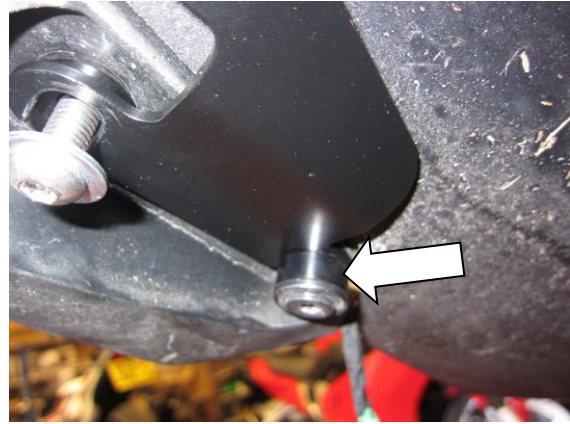


PHOTO 16

INSTRUCTIONS POUR MONSTER 821 2014-

- Pour monter le support R&G, enlever le siège du pilote à l'aide de la clé, voir photo 1.
- Enlever les 4 boulons indiqués sur les photos 2 et 3 puis retirer le support de plaque d'origine (Notez qu'il est monté dans des rondelles de caoutchouc) voir photo 4.
- Baisser le support et posez le sur la roue arrière comme sur les photos 7 et 8.
- Enlever les 4 vis et les 2 écrous indiqués sur les photos 5 et 6.
- Enlever le réflecteur d'origine et séparer les moitiés supérieures et inférieures du support.
- Déconnecter les prises de câble, voir photo 8, couper les 8 colliers de serrage indiqués sur les photos 7 et 8 pour permettre la séparation du linceul de fil.
- Déconnecter les 2 prises de clignotants étiquetés 'A' et 'B' sur la photo 7 (**note : Il est utile de marquer les fils à l'aide d'un marqueur adapté**).
- Enlever les 2 extensions filetés indiquées sur les photos 9 et 10 (Note : Ce sont les 2 les plus en arrière sur la moto).

Si vous montez les clignotants d'origines

- Glissez les tiges de clignotants dans les trous en forme de losange dans le nouveau support de plaque (article 1). C'est une bonne idée d'utiliser un peu d'huile ou de produit vaisselle pour faciliter l'installation, voir photo 11 (Veiller à ce que les clignotants soit installés du bon coté, comme à l'origine (avec les fentes d'écoulement vers le bas).

If Si vous installez les mini clignotants R&G (R&G produit code RG370=Ampoule, RG371=LED ou RG372=LED latérale).

- Si vous installez les minis clignotants R&G, nous vous suggérons de couper puis fermer le fil d'origine pour pouvoir réutiliser les connecteurs pour connecter les minis clignotants R&G au linceul de feu. Cela s'effectue en coupant les connecteurs des clignotants d'origine, avant d'installer les billes de connecteurs (article 9) au fil exposé et en utilisant les billes de connecteurs pour les connecter aux clignotants R&G. Brancher les dans le linceul pour vérifier le fonctionnement à ce stade (si l'éclairage échoue, tournez les connecteurs). (Utilisez la thermo rétractable (article 12) pour protéger les nouveaux fils de clignotants).
- A ce stade, il est utile de vérifier le fonctionnement des deux clignotants.
- Monter le feu de plaque R&G (article 6) sur l'ensemble comme indiqué sur la photo 12. Utiliser un peu de superglue pour coller le linceul de feu en position. Placer de la thermo rétractable (article 12) pour protéger les fils puis serrer les écrous à l'arrière, voir photo 12.
- Pour connecter le feu de plaque, utilisez les connecteurs de fils (article 9). Pour cela, nous suggérons de couper les connecteurs du fil de feu de plaque d'origine et de placer les billes de connecteurs (article 9) sur chaque fil, ce qui leur permettra d'être connectés au fil de feu de plaque R&G, avant de

R&G Racing

Unit 1 Shelleys Lane, East Worldham, Alton, Hants GU34 3AQ

Tel: +44 (0)1420 89007 Fax: +44 (0)1420 87301 www.rg-racing.com Email: info@rg-racing.com



vérifier que tout fonctionne correctement (si l'éclairage échoue, tournez les billes de connecteurs) (Cette connexion peut également être soudée) voir photo 13.

- Placer une des rondelles (article 3, étiquetée B sur la photo 14) sur un des boulons (article 4, étiqueté A sur la photo 14) et dans une des fentes les plus en arrière dans le nouveau support de plaque (article 1, étiqueté C sur la photo 14) puis placer une des entretoises en forme de chapeau (article 5, étiquetée D sur la photo 14) sur l'extrémité du boulon, voir photo 14.
- Mettre le support en position comme sur la photo ci dessous et engager le filetage (ne pas bloquer le serrage à ce stade).



- Placer la rondelle restante (article 3, étiquetée B sur la photo 14) sur le boulon restant (article 4, étiqueté A sur la photo 14) et dans la fente restante la plus en arrière dans le nouveau support de plaque (article 1, étiquetée C sur la photo 14) puis placer l'entretoise en forme de chapeau (article 5, étiquetée D sur la photo 14) sur l'extrémité du boulon, voir photo 14.
- Engager le filetage (ne pas bloquer le serrage à ce stade).
- Placer les 2 entretoises restantes (article 2) sur les extensions filetées avant, voir photos 15 et 16 puis utiliser les boulons d'origine pour fixer et serrer.
- Serrer les boulons restants.
- Reconnecter les prises de fils comme à l'origine (si le feu de plaque ou les clignotants ne fonctionnent pas, tournez les connecteurs, cela devrait fonctionner).
- Vérifier que tous les feux fonctionnent.
- Utiliser les colliers de serrage (article 10) et clips de câble (article 11) pour maintenir les fils. Vous pourriez avoir à tirer le lindeul de feu sous le compartiment sous le siège pour éviter que les fils ne pendent. Veiller à ce que les fils ne puissent pas aller en arrière.
- Vérifier que le support de plaque soit correctement monté puis fixer.
- Remettre le siège.
- Remettre la plaque d'immatriculation (cela peut nécessiter un perçage).
- **IMPORTANT: Si vous installez une grosse plaque, il y a un risque que la plaque entre en contact avec la roue arrière en cas de choc sur la route (bosse, grosse charge etc...). Il est de votre responsabilité de vérifier que cela ne puisse pas se produire. Ne pas effectuer ces vérifications peut entraîner des dommages ainsi que des blessures graves pour le pilote.**
- Selon la loi locale, monter le réflecteur (article 8) à l'emplacement approprié.
- Revérifiez que les clignotants, les feux de plaque ainsi que tous les autres feux fonctionnent correctement avant de prendre la route.

INSTRUCTIONS DE MONSTER 1200 2014-

Note : Pour ce modèle vous devrez retirer les supports clignotant d'origine et le fil aura un routage légèrement différent.

Ces instructions sont disponibles au téléchargement sur www.rg-racing.com

R&G Racing

Unit 1 Shelleys Lane, East Worldham, Alton, Hants GU34 3AQ

Tel: +44 (0)1420 89007 Fax: +44 (0)1420 87301 www.rg-racing.com Email: info@rg-racing.com



ISSUE 1 18/11/2014 (NSY)

CONSUMER NOTICE

The catalogue description and any exhibition of samples are only broad indications of the Products and R&G may make design changes which do not diminish their performance or visual appeal and supplying them in such state shall conform to the order. The Buyer acknowledges no representation or warranty (other than as to title) has been given or will apply to the Products other than those in R&G's order or confirmation and the Buyer confirms it has chosen the Products as being of merchantable quality and suitable for its particular purposes. Where R&G fits the Products or undertakes other services it shall exercise reasonable skill and care and rectify any fault free of charge unless the workmanship has been disturbed. The Buyer is responsible for ensuring that the warranty on the motorcycle is not affected by the fitting of the Products. On return of any defective Products R&G shall at its option either supply a replacement or refund the purchase money but shall not be liable if the Products have been modified or used or maintained otherwise than in accordance with R&G's or manufacturer's instructions and good engineering practice or if the defect arises from accident or neglect. Other than identified above and subject to R&G not limiting its liability for causing death and personal injury, it shall not be liable for indirect or consequential loss and otherwise its liability shall be limited to the amounts paid by the Buyer for the Products or the fitting or service concerned. These terms do not affect the Buyer's statutory rights.

R&G RACING RETURNS POLICY (NON-FAULTY GOODS)

Returns must be pre-authorised (if not pre-authorised the return will be rejected). Goods may only be returned direct to us if they were purchased direct from us (customer must prove if necessary). Otherwise to be returned to original vendor. Goods must be in re-sellable condition, in the opinion of R&G Racing. All returns are subject to a 25% restocking and handling fee (25% of the gross value exc. P&P – at the prevailing price at time of purchase). The customer must pay any and all carriage charges. No returns of discontinued products, unless within 14 days of purchase. This policy does not affect your statutory rights and does not refer to faulty goods.